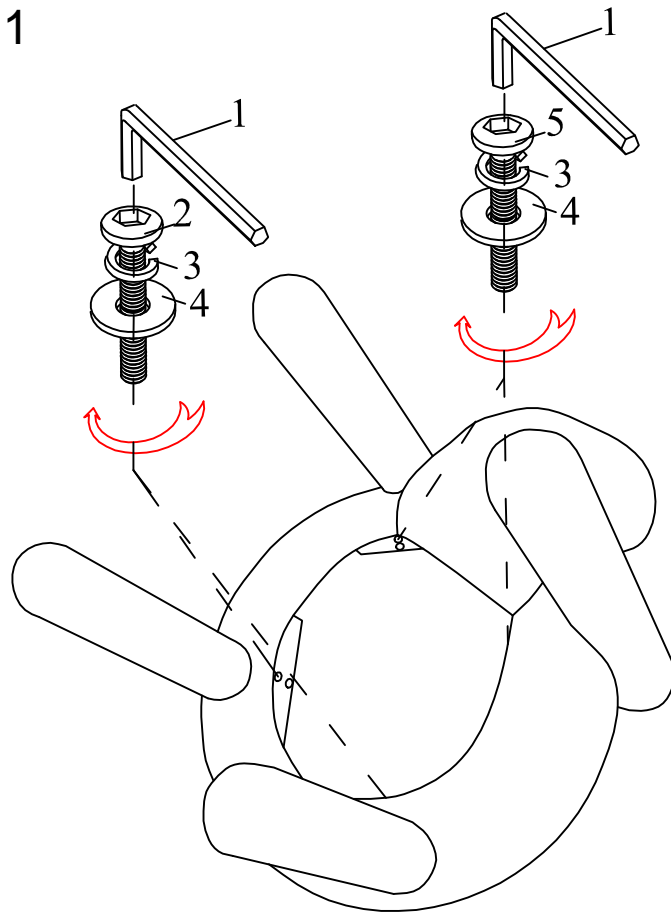


# ASSEMBLY INSTRUCTIONS

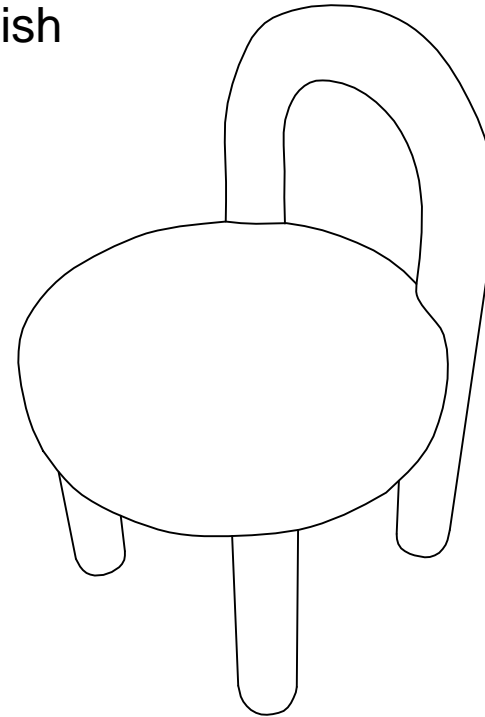
## 80200-XXX-2P

Step 1








Please leave bolts loosened until all bolts are placed before tightening completely

Finish



### Hardware

1		"L" Wrench	1pc
2		Bolt 8*50mm	4pcs
3		Spring Washer	8pcs
4		Flat Washer	8pcs
5		Bolt 8*90mm	4pcs